

Survey made for - Hunters

May 30 - 1907

7-16

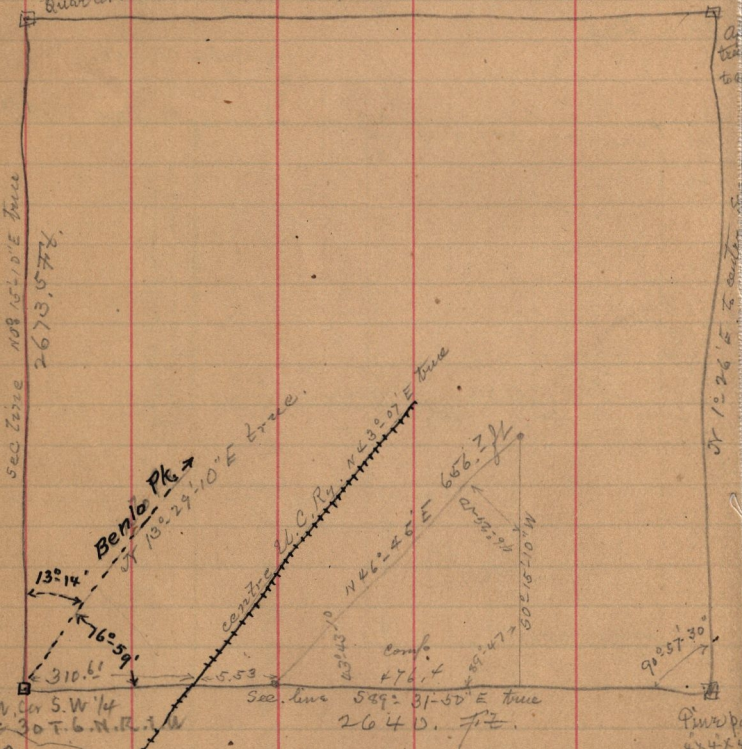
Charlotte S. Barrett to Maggie Hunter
Pt S. W 1/4 Sec 30 - T. 6. N. R. 1. W.

Orig. 4.79 ch E. of S.W. cor. of said 1/4 Sec.

N. $46^{\circ}45'E$ 9.90 ch on E. line of U.C. Ry

track - S. 6.31 ch N 7.26 ch to end subject
to any roads that may lawfully exist thereon

Quarler.



520 paces 87
this block
& paces 121 - Bank
J.H.